

Books, tools and software to educate and protect employers and workers

- online culture and assessment tools
- mobile application
- books, cards and posters



Safety culture

Culture can be best understood as “the way we do things around here”. Culture forms the context within which people judge the appropriateness of their behaviour. An organisation’s culture will influence human behaviour and human performance at work. Poor safety culture has contributed to many major incidents and personal injuries.

An organisation’s culture can have as big an influence on safety outcomes as the safety management system. Safety culture is a subset of the overall organisational or company culture. Many companies talk about safety culture when referring to the inclination of their employees to comply with rules or act safely or unsafely. However, culture and style of management is even more significant, for example a natural, unconscious bias for production over safety, or a tendency to focus on the short-term and being highly reactive. Success normally comes from good leadership, good worker involvement and good communications.

Benefits of a strong safety culture are:

- reduced accidents and near-misses
- improved worker morale
- enhanced productivity
- compliance with international standards
- improved reputation
- higher worker retention
- increased worker engagement levels
- continuous quality improvement

The Health and Safety Executive (HSE) Safety Climate Tool can help organisations measure and improve safety culture by providing an assessment and guidance.



Safety Climate Tool (SCT) 2.0



The Safety Climate Tool 2.0 has been enhanced in response to user feedback. It now offers improved functionality, easier navigation, and new features that deliver greater value and benefits.

Using an online 40-set question survey, the Safety Climate Tool explores your workers' attitudes and perceptions in key areas of health and safety, while guaranteeing anonymity. Once the survey has been completed, it generates a comprehensive report and provides guidance that will help manage and improve the organisation's safety culture over time.

Key benefits

- Reduce the number of accidents and near misses by using it as a leading indicator to proactively measure and improve safety culture.
- The results can be used to support ISO45001 and other leading accreditations.
- Available in over 56 language templates (Arabic, French, Mandarin (Traditional), German, Japanese, Spanish etc.)
- Can be customised to include your organisation's logo, write a personalised introduction, choose the most appropriate demographic responses, and tailor the terminology used in the core statements.
- Ability to benchmark results against HSE's exclusive industry dataset.
- Automatically analyses the responses and generates a valuable summary report of the results.
- Examines employee and management results for comparison.
- Creates bespoke reports of your chosen demographics to highlight key priorities going forward.
- Provides suggestions for next steps and recommendations on how to address them.
- Can be used at any time from your own secure web account, making the process simple, quick and convenient.
- Data can be segmented in a range of different ways to identify good practice as well as areas for improvement.



Winner of 'Best Use of Health and Safety Data to Lower Incident Rates'

Learn more: books.hse.gov.uk/safety-climate-tool-sct

Work-related stress

The Health and Safety Executive (HSE) defines stress as ‘the adverse reaction people have to excessive pressures or other types of demand placed on them’.

Employees feel stress when they can’t cope with pressures and other issues placed on them. Employers should match demands to employees’ skills and knowledge. For example, employees can get stressed if they feel they don’t have the skills or time to meet tight deadlines. Providing planning, training and support can reduce pressure and bring stress levels down.

Stress affects people differently – what stresses one person may not affect another. Factors like skills and experience, age or disability may all affect whether an employee can cope.

HSE developed the Management Standards which are six main areas of work design that can affect stress levels. They are: demands, control, support, relationships, role and change

Benefits of managing work-related stress:

- significant cost savings
- improved worker morale
- enhanced productivity
- higher worker retention
- improved reputation
- compliance with international standards
- increased worker engagement levels
- continuous quality improvement

Learn how the HSE Stress Indicator Tool can help organisations understand, assess and manage risk.



Stress Indicator Tool

The Stress Indicator Tool helps you understand the causes of work-related stress and take action to protect your people and your organisation.

It is an online 35-question survey centred around the six key areas of work design: demands, control, support, relationships, role and change.



Workers complete the survey anonymously, giving honest feedback on their experiences and perceptions of stress at work. The results can be used as part of the risk assessment process in HSE's Management Standards approach.

There is an additional set of questions, developed with the University of Hull, for people who work partly or fully from home. This covers stress, anxiety, and depression and reflects changes in working practices and technology.

Once the survey has been completed, the analysis report is generated automatically. It summarises workers' views, highlights areas for improvement, and provides recommendations, without the need for manual data entry. This ensures accurate, reliable information to support action on work-related stress.

Key benefits

- Evidence-based assessment – it is built on the HSE Management Standards, ensuring alignment with recognised best practice.
- Comprehensive insight – it helps organisations identify the root causes of work-related stress across the six areas of work design.
- Worker voice – it provides a structured and GDPR-compliant way for workers to share their views and experiences anonymously.
- Action-focused reporting – automated reports summarise results, highlight priority areas, and offer recommendations for improvement.
- Improved well-being and performance – by addressing stress factors, organisations can reduce sickness absence, increase engagement, and enhance productivity.
- Compliance support – helps employers meet their legal duty to assess and manage risks to workers' health and well-being, while also supporting accreditation to standards such as ISO 45001 and ISO 45003.
- Exclusive HSE benchmarking – results can be compared internally over time or against other organisations to track progress and benchmark performance.

Learn more: books.hse.gov.uk/stress-indicator-tool-sit

Accidents and Near misses

Accidents and near misses provide early warnings about risks that may not yet be fully understood or controlled. They show where systems, processes or behaviours have not worked as intended and where people may be exposed to harm. Treating these events as valuable information rather than isolated incidents helps organisations reduce the likelihood of more serious outcomes.

Investigating accidents and near misses is a key part of effective health and safety management. A systematic investigation builds a clear picture of what happened, why it happened and what needs to change. It allows employers and workers to identify underlying causes, not just the immediate triggers, and take proportionate action to prevent recurrence. This helps create safer workplaces, supports legal compliance and strengthens a culture where risks are recognised and managed before they escalate.

Reporting under the Reporting of Injuries, Diseases and Dangerous Occurrences Regulations (RIDDOR) is a legal requirement for certain types of work-related incidents. It ensures that serious injuries, occupational diseases and specified dangerous occurrences are formally recorded and notified to the relevant enforcing authority. Timely and accurate reporting helps regulators monitor patterns, target enforcement and provide guidance where needed. It also supports employers in understanding their own risk profile and demonstrates that significant incidents are being taken seriously.

Learn how the HSE Accident and Near-miss Tool can help reduce the burden of managing incident records while ensuring compliance with RIDDOR.



Accident and Near-miss Tool

The newly released Accident and Near-miss Tool helps organisations reduce the burden of managing incident records while ensuring compliance with the Reporting of Injuries, Diseases and Dangerous Occurrences Regulations (RIDDOR).

It automates the collection of accident and near-miss records, allowing teams to filter by location, type or date. This helps you understand more deeply how risks occur and take informed preventive measures.



The tool guides duty holders through HSE's step-by-step investigation framework (HSG245), providing expert advice on investigating incidents and preventing recurrence. This supports accurate reporting, consistent investigation and effective incident management.

How it works

- Works on any device via online browser Simple setup with step-by-step guidance
- Configure the system by site, department, activity or function
- Automatically flags potential RIDDOR-reportable incidents
- Sends instant alerts to designated contacts
- Securely stores all submissions in a searchable central database

Key benefits

- Supports effective investigation using HSE's step-by-step process
- Aids compliance with RIDDOR and social security law record-keeping
- Easy to use and fully configurable
- Encourages worker engagement in identifying risks
- Quickly filters and retrieves relevant reports
- Provides a dashboard for performance monitoring and trend analysis
- Fully GDPR compliant and cyber secure

Learn more: books.hse.gov.uk/accident-and-near-miss-tool

Musculoskeletal disorders

Musculoskeletal disorders (MSDs) include injuries and conditions that can affect the back, joints and limbs. Employers must protect workers from the risks of MSDs at work.

There are risk factors causing MSDs in many types of work. They include risk factors to do with the work, such as:

- lifting heavy or bulky loads
- pushing, pulling or dragging heavy loads
- bending, crouching or stooping
- stretching, twisting and reaching
- sustained or excessive force
- repetitive tasks, particularly using the same hand or arm action
- carrying out a task for a long time
- work with display screen equipment, such as PCs, laptops, tablets or smartphones
- working with hand-held power tools for a long time
- driving heavy vehicles, long-distance driving or driving over rough ground

Duty holders must manage the risk of MSDs in the workplace. If these risks exist they must consider both the requirements for a general risk assessment and specific assessments of other risks, for example, from:

- manual handling
- repetitive work and awkward postures
- the health risks of working with display screen equipment such as PCs, laptops, tablets and smartphones
- exposure to vibration, for example from driving mobile machinery over rough ground or using powered, hand-held tools

Learn how the HSE Musculoskeletal Disorder Tool helps organisations complete risk assessments by saving assessors time in populating the results manually.



Musculoskeletal Disorders Assessment Tool

The MSD assessment tool is the latest tool in the range from the HSE. It combines the popular MSD assessment guides manual handling assessment charts (MAC), assessment of repetitive tasks (ART), risk assessment of pushing and pulling (RAPP) and back injury risks in driving tool (BIRD) and transforms them into an all-in-one digital solution.

Employers and safety representatives can use the MSD tool to easily assess the risks posed by physical, strenuous activities. The assessor can then understand, interpret, categorise and communicate the level of risk. It has been designed to simplify the process of completing each assessment, with a logical step-by-step approach, saving your assessors time in populating the results manually.

The Tool is available for free so organisations can conduct individual MAC, ART and RAPP assessments (BIRD is not included). However, for organisations who conduct multiple assessments throughout the year or want to be able to analyse their assessments; a premium option is available.

The full premium version of the MSD tool includes:

- an overall organisation report to examine the assessments
- the option to tailor and set demographics to fit your company structure
- the use of a bespoke mobile app to complete the assessments offline
- an easy to use and fully GDPR compliant system that stores all completed tasks and assessments

The assessment part of the MAC, ART and RAPP tools are available to use for free. Simply visit the links below to start creating assessments.

- MAC Tool: sds.hsl.gov.uk/survey/mactoolfree
- ART Tool: sds.hsl.gov.uk/survey/arttoolfree
- RAPP Tool: sds.hsl.gov.uk/survey/rapptoolfree

Visit: books.hse.gov.uk/musculoskeletal-msd-online-assessment-tool



Back Injury Risks in Driving Tool

The ‘Back Injury Risks in Driving Tool’ is designed to collect information that will help determine those issues that present the greatest risk of back injury and discomfort to drivers and provide pointers to improvements that may be made to reduce those risks.

There is an excess of lower back pain and injury amongst those workers involved with driving activities; many factors may be responsible, either alone or in combination. Generally, vibration risk is related to driving speed and the quality of road surfaces.

HSE recommends taking a holistic approach to managing risks of back pain, considering posture, twisting and manual handling as well as vibration exposure. Back pain is more likely to be associated with off-road driving, rather than driving on roads or good quality surfaces.

The most prevalent industries and activities are:	Back pain in driving can be attributed to a number of factors, including:
<ul style="list-style-type: none">● agriculture / forestry / military● boats – small fast boats / ribs● boats / ships – general● civil works (earth moving)● industrial truck driving e.g. warehouse / airports● mines / quarries● ports● road transport● other (off-road)● other (tarmac or similar roads)	<ul style="list-style-type: none">● poor design of controls, making it difficult for the driver to operate the machine or vehicle easily or to see properly without twisting or stretching● incorrect adjustment by the driver of the seat position and hand and foot controls, so that it is necessary to continually twist, bend, lean and stretch to operate the machine● sitting for long periods without being able to change position● poor driver posture● repeated manual handling and lifting of loads by the driver● repeatedly climbing into, or jumping down from, a high cab, or repeatedly getting into and out of a cab that is difficult to access● excessive exposure to whole-body vibration, particularly to shocks and jolts

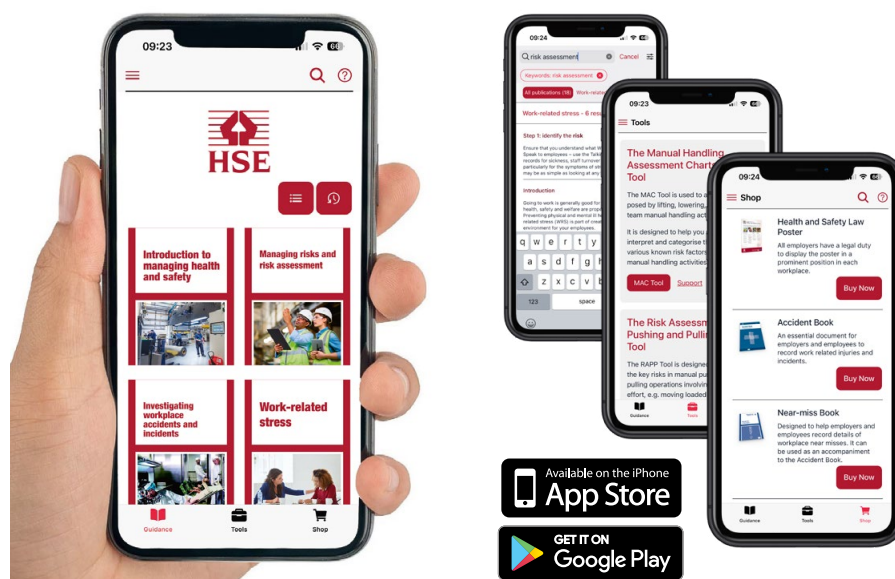


Official HSE Health and Safety App

The official HSE mobile app has been designed to help people better understand the law, their health and safety rights, and their responsibilities.

HSE is dedicated to protecting people and places, and helping everyone lead safer and healthier lives. Ensuring that guidance is available and accessible in a variety of formats is central to achieving this objective. The app has recently been updated to include videos and dedicated sections:

- **practical risk management tools:** Access the digital tools, such as the musculoskeletal (MAC, ART, and RAPP) and stress risk assessments
- **risk management videos:** Exclusive practical videos delivered by an HSE inspector that guide you through the risk management process
- **introduction to managing health and safety:** Find the right guidance for your business and how to make arrangements to manage health and safety
- **managing risks and risk assessment:** Provides a simple step-by-step guide and practical advice on how to manage risk within an organisation
- **investigating workplace accidents and incidents:** Learn what the Law says you should do and how to investigate
- **work-related stress:** Includes a condensed version of HSE's stress management standards approach
- **publication list:** Includes a full publications and reference list



Recently published titles

'where asbestos hides' posters

These posters have been designed to inform workers the most common locations asbestos can be found in industrial and residential buildings. Whether you are a building owner, landlord, employer or person responsible for building maintenance, you should be aware of where asbestos can be found in buildings. You need to protect yourself and others.



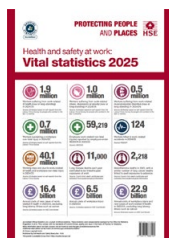
Residential 'where asbestos hides' A3 poster

9780717667512



Industrial 'where asbestos hides' A3 poster

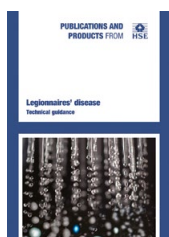
9780717667529



Health and safety at work: Vital statistics 2025 A3 poster

The Health and Safety Executive (HSE) routinely publishes annual statistics on health and safety in Great Britain. This poster visualises the key statistics as an infographic, allowing health and safety professionals to easily educate their workers about the consequences of poor health and safety.

9780717668199

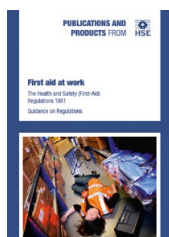


Legionnaires' disease: Technical guidance 2nd edition (HSG274)

The guidance includes:

- Part 1: The control of Legionella bacteria in evaporative cooling systems
- Part 2: The control of Legionella bacteria in hot and cold water systems
- Part 3: The control of Legionella bacteria in other risk systems.

9780717667536



First Aid at Work: The Health and Safety (First Aid) Regulations (L74)

The 2024 updates include:

- emphasise employers' responsibilities to take account of employees' mental health in their first-aid needs assessment
- change the term 'catastrophic bleeding' to 'life-threatening bleeding' with more guidance on what employers should do if they identify this as a risk in their workplace
- simplify guidance on first aid training providers.

9780717665600

Money saving packs

20% off individual prices



Accident Book and A3 Law Poster Pack

A fantastic offer for all businesses, especially SMEs. This pack brings together two essential publications to ensure safety in the workplace. Pack consists of Accident Book 9780717666935 and A3 Law poster 9780717663699

9780717667147



The Protective Mask Poster Pack

Pack consists of Filtering Face Pieces Poster and (INDG460 Poster) Is Your Mask Protecting You?

9780717666904



Health and Safety Recording and Reporting Pack

The Accident Book is an essential document for employers and employees, who are required by law to record and report details of specified work-related injuries and incidents.

The Near-miss Record Book will allow you to see if there are any patterns in when or how things go wrong which can provide an early warning that something needs attention. It makes good business sense to be proactive and take action early when problems are likely to be less serious.

9780717667437



Health and Safety Awareness Posters (5 Pack)

Health and safety awareness poster pack from the HSE. Includes: Is Your Mask Protecting You, Safe Handling of Chemicals, First Aid at Work and Workplace Stress. This pack is certain to capture the attention of your employees and improve their knowledge and understanding on these important health and safety matters.

9780717667406

Health and Safety Law

What you need to know posters

This poster can be purchased in either A2 or A3 (it is not available in other sizes) directly from HSE Books and verified resellers.

All employers have a legal duty under the Health and Safety Information for Employees Regulations (HSIER) to display the poster in a prominent position in each workplace or provide each worker with a copy of the equivalent leaflet which is available as a download or in print.



Standard A2 poster
2009 | 9780717663149
A3 poster
2009 | 9780717663699



Welsh version A2 poster
2009 | 9780717663477



Offshore version A2 poster
2009 | 9780717663736



Northern Ireland version A2 poster
2009 | 9780717663545



A3 Law Poster and Frame Pack

The A3 Healthy and Safety Law Poster and Snap frame pack is perfect for securely displaying and mounting the Health and Safety Law poster.

9780717667253



Basic Advice on First Aid at Work A3 Poster

9780717666706



Health and Safety Law – What you need to know pocket cards

Pack of 25 pocket cards for workers in premises in Great Britain

2009 | 9780717663507

Pack of 25 pocket cards for workers in offshore installations

2009 | 9780717663675

Pack of 25 pocket cards for workers in premises in Northern Ireland

2009 | 9780717663569



Electric Shock: First aid procedures A3 poster

9780717666690



A2 COSHH Cleaning Chemicals Poster

9780717667161



The Accident Book

This is an essential document for employers and employees, who are required by law to record and report details of specified work-related injuries and incidents.

It enables businesses to comply with legal requirements under social security and health and safety legislation, including Reporting of Injuries, Diseases and Dangerous Occurrences Regulations (RIDDOR) requirements. It is designed to support users in being GDPR compliant.

BI510 2018 | 9780717666935

Available in a pack of 10 copies:

9780717667048



Near-miss Book: Recording and reporting near misses at work

The Near-miss Book has been produced to help employers and employees record details of workplace near misses. A pattern of near misses provides an early warning of areas that need attention.

Protect your business by encouraging your employees to use this record book and reduce the risk of something going wrong.

9780717667420



Safe Deal Playing Cards

Interactive playing cards help you increase the opportunities to talk both formally and informally about the human factors that affect your organisation. The cards can make it much easier to break the ice, broach big subjects and start meaningful discussions.

They can be used by anyone – health and safety professionals, managers, supervisors and safety reps – to begin talking about safety. The more you talk about safety, making it an on-going open dialogue, the more likely it is you will engage your workforce in safety becoming ‘part of the job’.

9780717666782

Safe Deal | 1 Pack Safe Deal | 3 Packs Safe Deal | 10 Packs



Healthy Deal Playing Cards

Healthy Deal is a set of playing cards that can be used to raise awareness about the ‘health’ in ‘health and safety’.

Each card contains useful information and questions about health risk management and prompts discussion about how your organisation approaches it.

Healthy Deal is designed to be used by health and safety, occupational health and HR professionals with their leaders, managers and supervisors to raise the profile of health risk management to give it equal priority alongside safety. Evidence shows that taking an approach to worker protection that integrates employee health and wellbeing alongside safety offers the greatest benefits both to the individual and to the organisation.

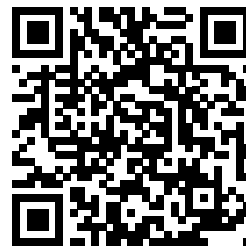
9780717666928

Healthy Deal | 1 Pack Healthy Deal | 3 Packs Healthy Deal | 10 Packs

For further information

This catalogue highlights some of the key publications and products from Great Britain's health and safety regulator.

For a full list of official publications available and to purchase the hard-copy versions, visit: books.hse.gov.uk or download the official HSE health and safety mobile app from the iOS and Google Play stores.



Subscribe to the free HSE eBulletin service for updates.

This 2025 guidance catalogue replaces all earlier editions.

Order enquiries:

Email: hseorders@tso.co.uk

Tel: +44 (0)333 202 5070

Text-phone:

+44 (0)333 202 5077

Pay by post:

Customer Services, PO Box 29, Norwich NR3 1GN.

Call Customer Services to discuss all payment options: Tel: +44 (0)333 202 5070

If you require an invoice before you can raise payment, then contact our Customer Services to arrange: Tel: +44 (0)333 202 5070

Prices, publication dates, titles and jackets are correct at time of going to press but may be subject to change without notice. TSO is the largest publisher in the UK by volume. We have a 200 year inheritance of secure, no-fail delivery as publisher to UK Government and Parliament and more recently, as publisher for many commercial organisations. The Stationery Office Ltd. is part of Williams Lea, the global leader in corporate information solutions. The Stationery Office Ltd. Company Registered Number 3049649.

Registered office: 18 Central Ave, Norwich NR7 0HR. VAT registration number is GB662774703 and our email address is customer.services@tso.co.uk. The marketing of products published by TSO is funded by TSO.



TSO is the Official Publisher for the
Health and Safety Executive (HSE)

12/25



Regulatory
excellence



Scientific
expertise



Real world
experience



RESEARCH AND
GUIDANCE FROM 

Freely available to
help people comply
with health and
safety law



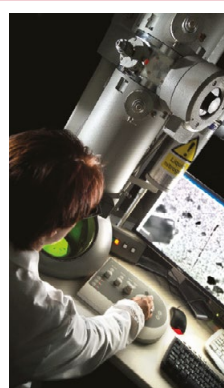
PUBLICATIONS AND
PRODUCTS FROM 

Books, tools and
software to educate
and protect employers
and workers



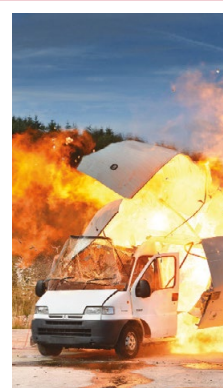
TRAINING AND
EVENTS FROM 

Training and events
to build competence,
ensure compliance
and protect people
and places



TESTING AND
MONITORING FROM 

Large-scale testing of
products, materials
and processes.
Laboratory-based
sample analysis and
exposure monitoring.
Proficiency testing
of third-party
laboratories



BESPOKE RESEARCH AND
CONSULTANCY FROM 

Using our scientific
expertise and
regulatory insight to
address health and
safety risks, for
organisations or as
part of a shared
research programme